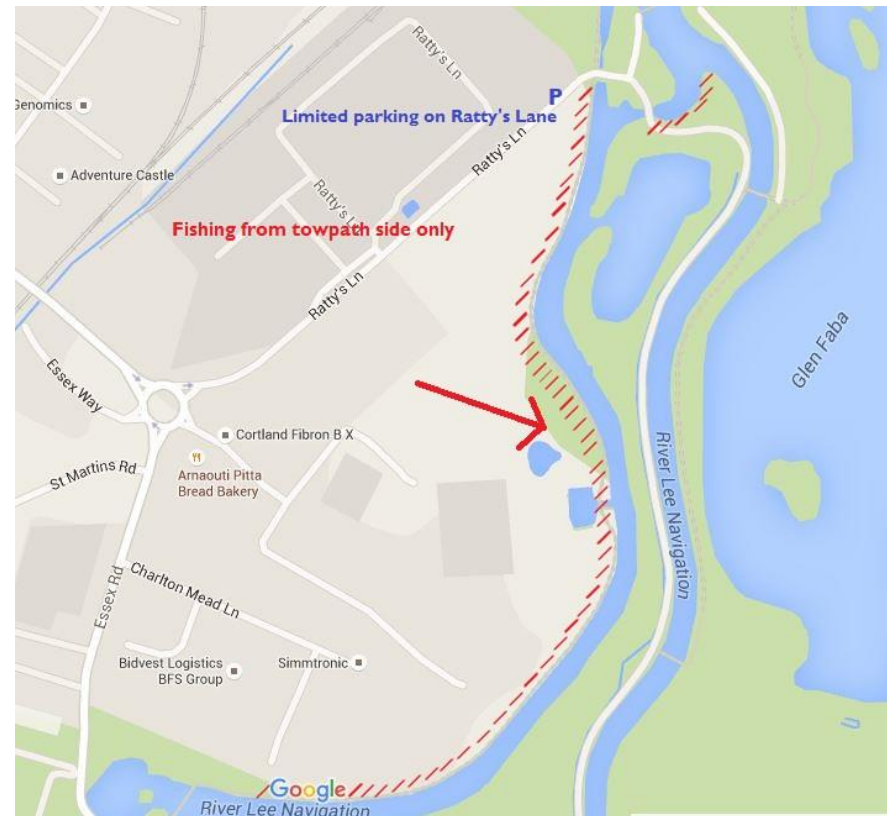
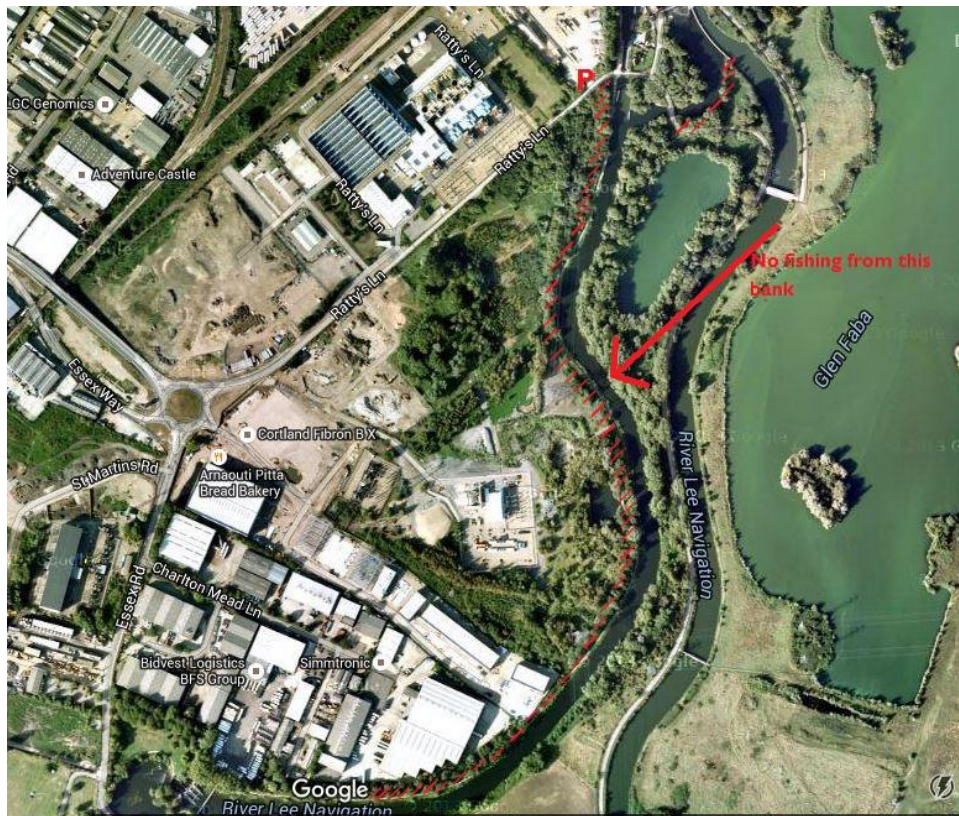


River Lea Navigation.



Access – Ratty's Lane to Fieldes Weir EN11 ORF. Limited parking on Ratty's Lane. Please park considerately. Dobb's Weir road/Dobb's Weir EN11 OBL
Pay and display car park by Fish and Eel's PH.

Fishing – In marked areas below Fielde's Weir only, no fishing beyond bridge. Fishing on towpath side only from below lock through to point opposite Fish and Eels public house. No fishing on eastern bank. Day tickets are available from bailiff on the bank. No fishing allowed on the flood relief channel.